

—
ZDHC Gateway

– Chemical

Module

Frequently

Asked

Questions

(FAQ)

—
Ø ZDHC

The Zero Discharge of
Hazardous Chemicals
Programme

Contents:

1. What is ZDHC and what is the ZDHC Gateway – Chemical Module?.....	2
2. What does the ZDHC Gateway – Chemical Module do?	2
3. Who can use the ZDHC Gateway – Chemical Module?.....	2
4. Why is it important to use the ZDHC Gateway – Chemical Module?.....	3
5. What are the benefits of using the ZDHC Gateway–Chemical Module?.....	3
6. What information is needed to join and use the ZDHC Gateway - Chemical Module? ..	4
7. What information can be searched for in the ZDHC Gateway – Chemical Module?	4
8. If I am a chemical formulator, can I make my product information private?	5
9. When will the ZDHC Gateway – Chemical Module be available?.....	5
10. How much does the ZDHC Gateway cost?.....	6
11. What is a “chemical product”?	6
12. Who owns and operates the ZDHC Gateway – Chemical Module?	7
13. What is the difference between being a ZDHC contributor and registering in the ZDHC Gateway - Chemical Module?	7
14. What languages will the ZDHC Gateway – Chemical Module be available in?.....	7
15. How does the ZDHC Gateway – Chemical Module assess a chemical product’s level of conformance?	7
16. How many levels of conformance are there, and what does each conformance level mean?	9
17. What if my chemical products do not meet any of the conformance levels?	10
18. Will the ZDHC Gateway – Chemical Module use other accreditations too? If so, can you list them?.....	10
19. Will the ZDHC Programme do any random independent testing to validate data presented?.....	10

1. What is ZDHC and what is the ZDHC Gateway – Chemical Module?

The Zero Discharge of Hazardous Chemicals (ZDHC) Programme is a collaboration of apparel and footwear brands and takes a holistic approach to tackling the issue of hazardous chemicals in the global textile, leather and footwear value chain.

The ZDHC Gateway – Chemical Module is a list of chemical formulations that helps the value chain make more informed sourcing decisions. It includes chemical information disclosed by chemical manufacturers including Material Safety Data Sheet (MSDS) / Safety Data Sheet (SDS), third-party certifications, analytical reports, Manufacturing Restricted Substances List (MRSL) compliance information, etc.

2. What does the ZDHC Gateway – Chemical Module do?

The ZDHC Gateway – Chemical Module maps products against existing chemical accreditation to provide textile, leather and footwear manufacturers with an indication of MRSL conformance levels. The higher the conformance level the more confidence there is that the formulation meets the ZDHC MRSL requirements.

The ZDHC Gateway – Chemical Module draws from existing chemical accreditation such as EcoPassport by OekoTex® Programme and ToxServices' Full Materials Disclosure™ (ToxFMD™) Programme.

3. Who can use the ZDHC Gateway – Chemical Module?

The ZDHC Gateway - Chemical Module is designed to assist brands, manufacturing facilities (suppliers) and chemical formulators (chemical manufacturers) in understanding the degree to which a formulated chemical product conforms to the ZDHC MRSL.

Brands and their suppliers can use the ZDHC Gateway - Chemical Module to search public chemical product and company information and invite other companies to join.

Chemical Formulators can disclose chemical product information in the ZDHC Gateway - Chemical Module to clients, search company information and invite other companies to join.

4. Why is it important to use the ZDHC Gateway – Chemical Module?

The ZDHC Gateway - Chemical Module is the only centralised, independent, non-proprietary product information source for the textile, leather and footwear industry to be assured of ZDHC MRSL conformance.

Without this type of portal, each textile manufacturer would need to assess every product from each of their chemical manufacturing facilities against ZDHC's MRSL to ensure conformance, and each chemical formulator would have to provide product conformance information to clients individually and repetitively.

5. What are the benefits of using the ZDHC Gateway – Chemical Module?

For brands and their suppliers, the ZDHC Gateway – Chemical Module acts as a search engine for chemical formulations that meet the ZDHC MRSL requirements so they can easily check conformance information of chemical products they use, and identify possible alternatives with higher confidence levels against the ZDHC MRSL. Therefore, improve overall sustainability performance within the organisation.

For chemical formulators, the ZDHC Gateway helps avoid the need to provide chemical information to multiple clients, and therefore, saves chemical formulators the time and effort of responding to multiple client requests for the same information. In addition, participation in the ZDHC Gateway – Chemical Module demonstrates a chemical formulator's commitment to ZDHC's overall mission to advance towards the zero discharge of hazardous chemicals.

6. What information is needed to join and use the ZDHC Gateway – Chemical Module?

For registration, companies will need to provide contact information and some basic company details, including company name in English, address, and company business registration information.

Using the ZDHC Gateway - Chemical Module, Chemical Formulators can disclose their product information to new and existing customers. For uploading product information in the system, users need to provide SDS, product details and a supplier self-declaration at minimum, and these products will be at confidence level 0. If users wish to have those products attain level 1 or above, they also need to provide additional, qualifying certifications. The list of currently accepted certification standards can be found [here](#). ZDHC is continually working to review new certification bodies in order to make new options available to our users and enhance the product data available.

7. What information can be searched for in the ZDHC Gateway – Chemical Module?

All suppliers and brand users will be able to search public chemical product information, SDS documents, certifications, and the associated MRSL confidence level.

Suppliers and Brands can search and view profiles of any Account in the ZDHC Gateway - Chemical Module. However, a supplier cannot view another supplier, and a brand cannot view another brand.

To maintain a level of competitive confidentiality, chemical formulators are limited to only viewing their own accounts and products. This is defined by their Account Type on set up.

Chemical formulation recipes ARE NOT uploaded to, shared or stored in the ZDHC Gateway - Chemical Gateway.

8. If I am a chemical formulator, can I make my product information private?

Yes, the ZDHC Gateway – Chemical Module allows companies to make products private or public.

- Private means this product information can only be viewed by the chemical formulator themselves. The Private function enables chemical formulators to temporarily save their chemical information in the ZDHC Gateway – Chemical Module before making it public.
- Public means this product is visible to all registered manufacturing facilities and brands in the ZDHC Gateway – Chemical Module, including any MSDS/SDS documents that have been made available, together with the certification information or other product information. The associated confidence level will be displayed on each Product Profile and summarised in the Company Profile.

9. When will the ZDHC Gateway - Chemical Module be available?

The ZDHC Gateway – Chemical Module was piloted in December 2016. As of June 1, 2017, the ZDHC Gateway – Chemical Module is open to all chemical formulators and ZDHC-affiliated suppliers and brands through coordination with ZDHC. For those companies that are part of the ZDHC Community please contact gateway@zdhc.org to develop plans to invite suppliers to participate in the ZDHC Gateway – Chemical Module.

As the ZDHC Gateway – Chemical Module improves and evolves, ZDHC will streamline an open system registration process. It is anticipated that in the first quarter of 2018, in addition to eliminating the need for any coordination with ZDHC, the ZDHC Gateway – Chemical Module will be offered to any company within the textile, leather and footwear industries – even those who are not ZDHC Signatory Brands or Value Chain Affiliates.

10. How much does the ZDHC Gateway – Chemical Module cost?

Currently, the ZDHC Gateway – Chemical Module is free for brands and suppliers. However, ZDHC is prioritising the invitation to brands and suppliers within the ZDHC community.

There are three subscription plans for chemical manufacturers – Basic (free), Pro (\$690/year) and Enterprise:

	Basic	Pro	Enterprise
Create and Publicise Company Profile	Limited Profile	Complete Profile	Complete Profile
Add Private Products to the Chemical Module of the ZDHC Gateway That Cannot Be Viewed by Brands and Textile and Footwear Suppliers		Unlimited	Unlimited
Display product-level conformance summary dashboard in a searchable profile that CAN be viewed by Brands and Textile and Footwear Suppliers.		✓	✓
Publicise and Promote Public Products to Brands and Textile and Footwear Suppliers		10 free Public Products (Additional credits \$18 per product)	Unlimited
Receive Product-Level Conformance Scores; Conformance Scores for Public Products CAN be Viewed by Brands and Textile and Footwear Suppliers		✓	✓

For more details, please contact gateway@zdhc.org

11. What is a “chemical product”?

The term *chemical product* is defined as each individual formulation or variant commercially offered for sale by the chemical formulator.

12. Who owns and operates the ZDHC Gateway – Chemical Module?

The ZDHC Foundation controls, governs and oversees the ZDHC Gateway – Chemical Module system, its methodologies and the data contained within it. [ADEC Innovations](#) has developed the ZDHC Gateway, including the Chemical Module, and continues to provide the infrastructure and support services that ensure its smooth operation.

13. What is the difference between being a ZDHC contributor and registering in the ZDHC Gateway – Chemical Module?

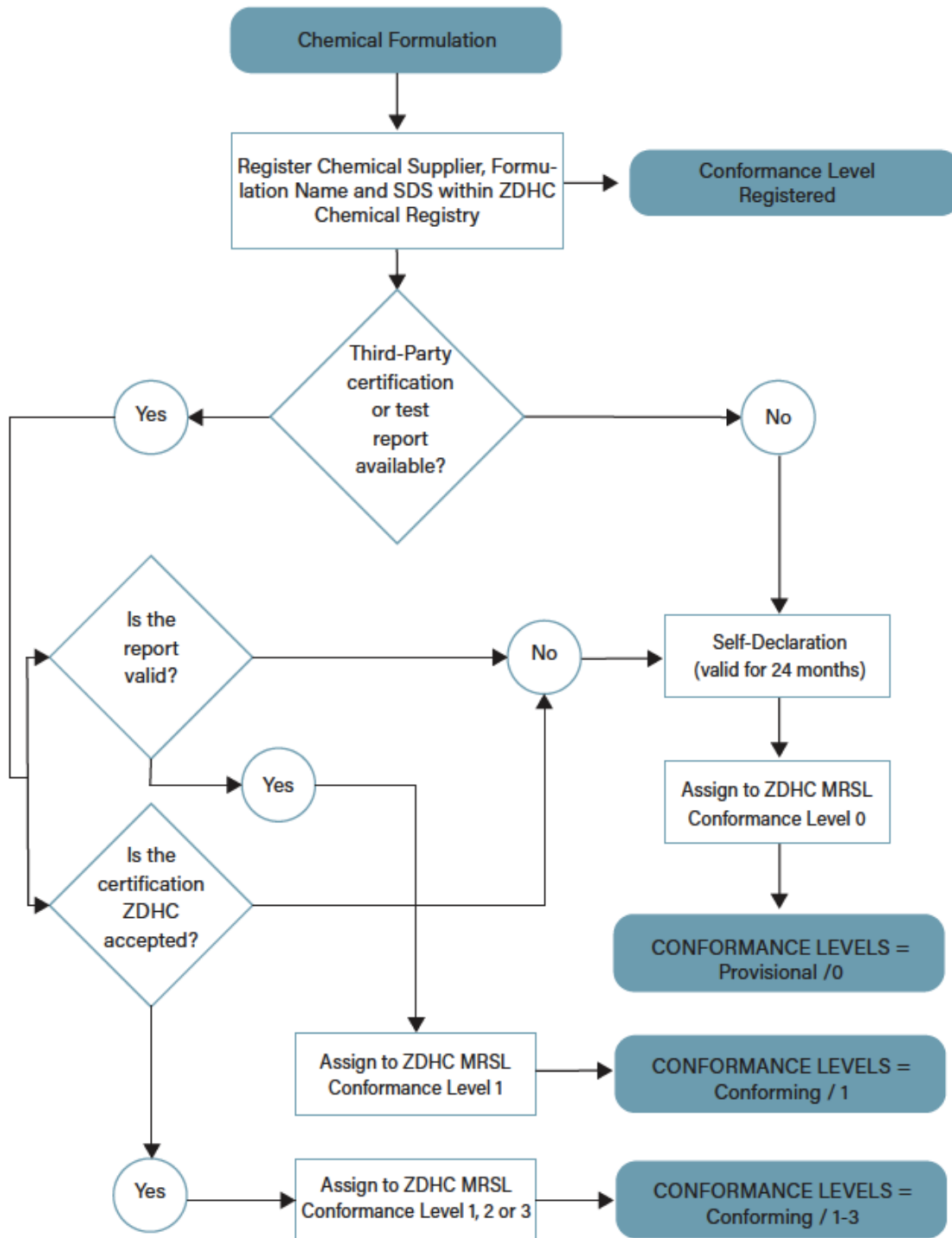
One of the first criteria to becoming a contributor to ZDHC as a chemical formulator is the company should have an active profile and product catalogue on the ZDHC Gateway – Chemical Module. This will be discussed with you as part of your contributor application.

14. What languages will the ZDHC Gateway – Chemical Module be available in?

Initially, the ZDHC Gateway – Chemical Module will be available in English, Simplified Chinese and Traditional Chinese. Other languages are being prioritised and continually added. We welcome feedback on the quality and level of translation. Please send enquiries to support@adec-innovations.com.

15. How does the ZDHC Gateway – Chemical Module assess a chemical product's level of conformance?

Please see the ZDHC MRSL Conformance Guidance by clicking [here](#), for a complete description of this process and the requirements for becoming an accepted certification body and each conformance level.



16. How many levels of conformance are there, and what does each conformance level mean?

The ZDHC Gateway - Chemical Module operates to ZDHC's latest [ZDHC MRSL Conformance Guidance](#) model. This model is based on three (3) levels of confidence starting at level zero.

It is important to note that these confidence levels are not certifications in and of themselves; rather, they reflect the volume and quality of information available that a particular product does, in fact, meet the ZDHC MRSL Criteria. Every level represents a positive piece of information available about a product's conformance.

Level 0 – the lowest level of confidence in meeting the ZDHC MRSL requirements. This means there is no review of the information provided by the chemical supplier by a ZDHC-accepted third-party. This conformance level is valid for 24 months and must be renewed at a higher level of conformance after that time.

Level 1 – the chemical product passed a third-party review of documentation or an analytical test report where the data meet the Quality Assurance and Quality Control requirements in the [MRSL Conformance Guidance](#) to be accepted as evidence of conformance.

Level 2 – the chemical product passed all the elements of MRSL Conformance Level 1 and a review of the product stewardship practices (health, safety and environment) of the chemical supplier by the third-party certifier.

Level 3 – the chemical product has all requirements for the elements of MRSL Conformance Level 2 and passed a site visit to the chemical formulator to evaluate their product stewardship first-hand.

17. What if my chemical products do not meet any of the conformance levels?

These chemical products will be listed in the ZDHC Gateway – Chemical Module as “unknown”, listed in the database with the ambition that they further develop their ingredients towards conformance.

18. Will the ZDHC Gateway – Chemical Module accept certifications other than those listed at www.roadmapzero.com ? If so can you list them?

Any third-party certification system that meets the ZDHC MRSL’s conformance guidance requirements can be included.

The ZDHC Programme is already cooperating with the third-parties listed at <http://www.roadmapzero.com/gateway/>. However, the system is designed to be open and transparent and others are invited to join. We welcome feedback and contributions on any new and existing certifications available.

19. Will the ZDHC Programme do any random independent testing to validate data presented?

No.